

Maslak Yazıcı Kurlumu / Printer Set-Up Mac/PC

Mac

TR: Mac için kurum linkine [buraya](#) tıklayarak ulaşabilirsiniz.

Mac CUPS/UFR II Printer Driver v10.8.1
Seçilerek Download edilecek.

Driveri kurduktan sonra lütfen 192.168.1.20 alttaki gördüğünüz adımları takip ederek kurulumunuzu tamamlayın.

Yazıcı kullanım ücretimiz,

A4 Siyah/Beyaz 0.20 TL
A4 Renkli 0.80 TL
A3 Siyah/Beyaz 0.40 TL
A3 Renkli 1.60 TL

EN: Please click here to download the MAC driver.

Choose the below driver and download.
Mac CUPS/UFR II Printer Driver v10.8.1

IP: 192.168.1.20

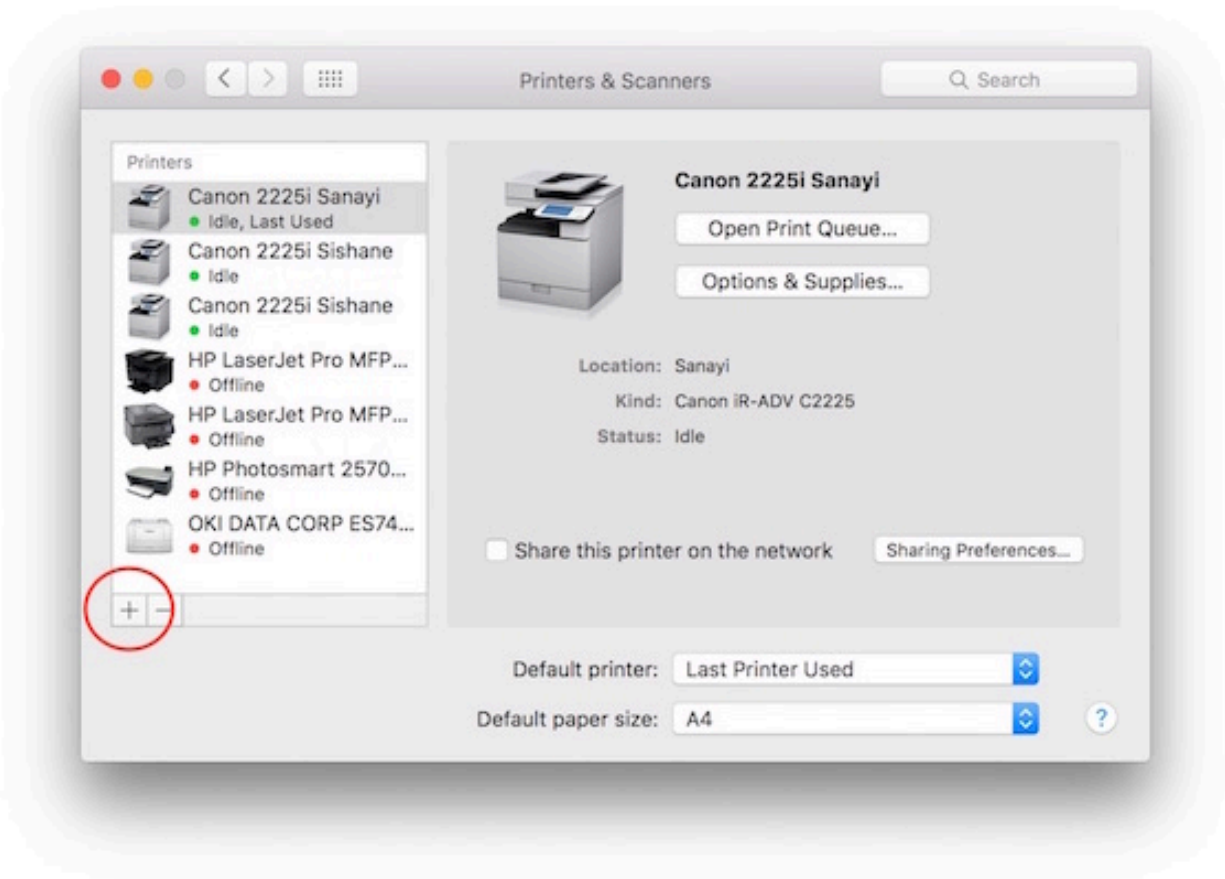
Our price list per paper printed,

A4 Black/White 0.20 TL
A4 Color 0.80 TL
A3 Black/White 0.40 TL
A3 Color 1.60 TL

1.



2.



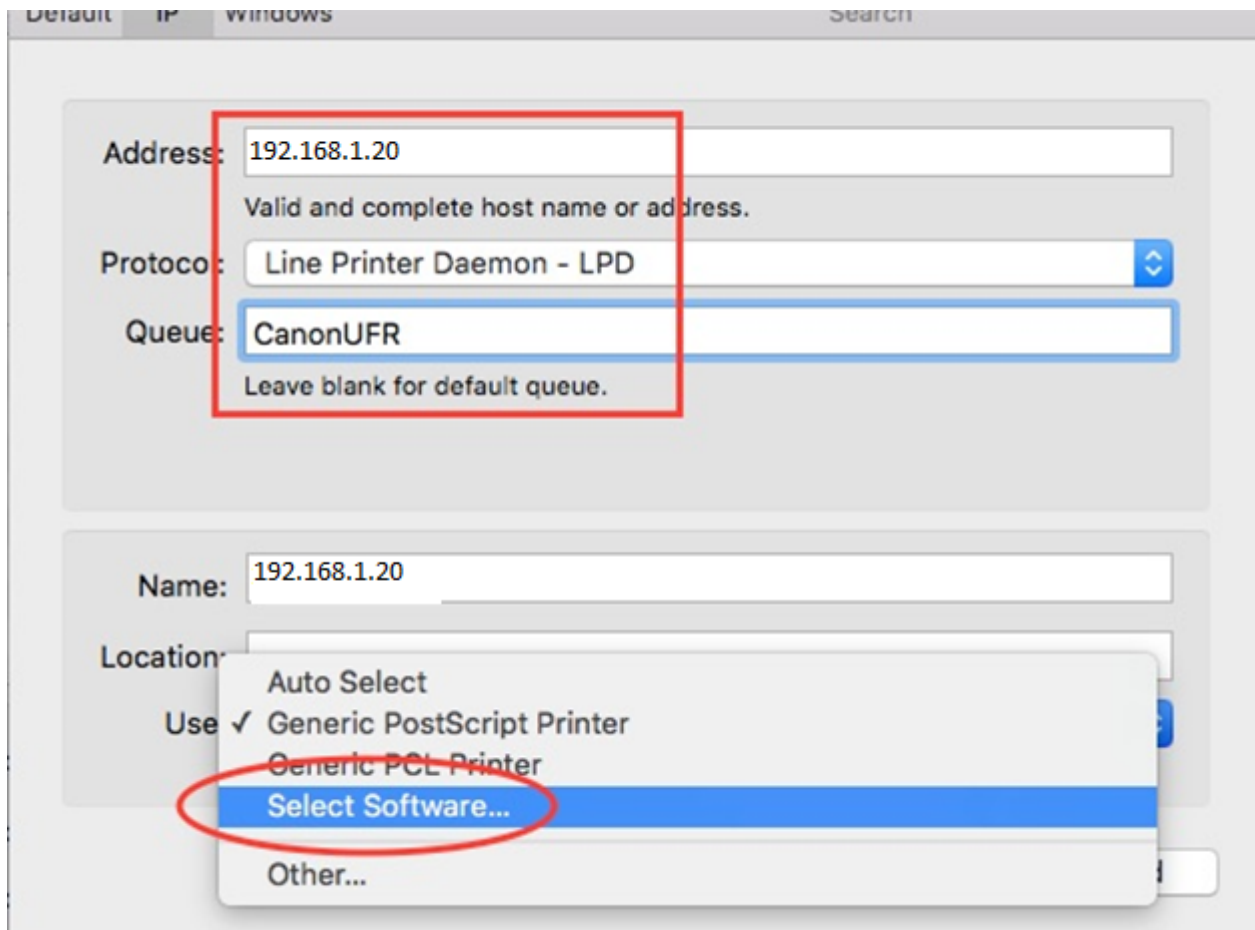
3.

The image shows a screenshot of a software interface titled "Add". At the top, there are three tabs: "Default", "IP", and "Windows". The "IP" tab is selected and circled in red. To the right of the tabs is a search bar with a magnifying glass icon and the text "Search". Below the search bar is another search bar with the text "Search". The main area of the dialog contains a table with two columns: "Name" and "Kind". The table is currently empty. Below the table are three input fields: "Name:", "Location:", and "Use:". The "Use:" field has a dropdown arrow. At the bottom right of the dialog is an "Add" button.

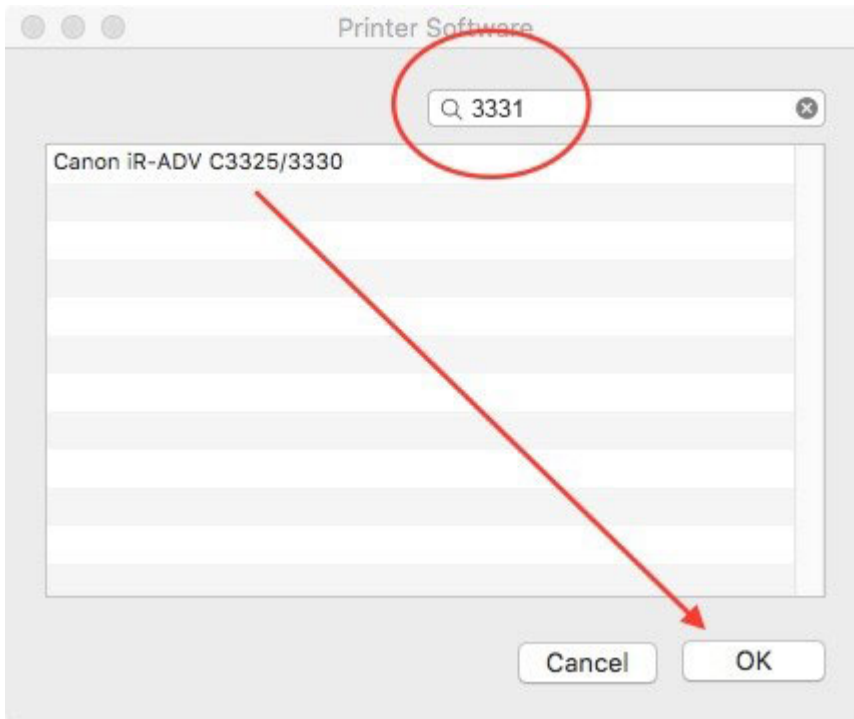
TR: Altta gördüğünüz bilgileri bire bir ve eksiksiz doldurunuz. (CanonUFR yazılmasına dikkat ediniz)

EN: Fill in the necessary information. This must be done separately for both **192.168.1.20**

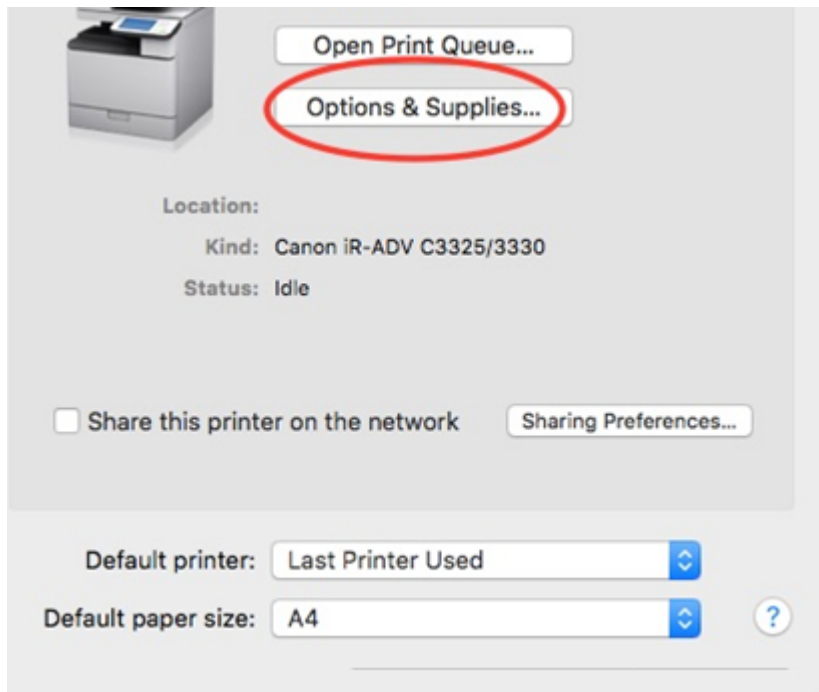
4.



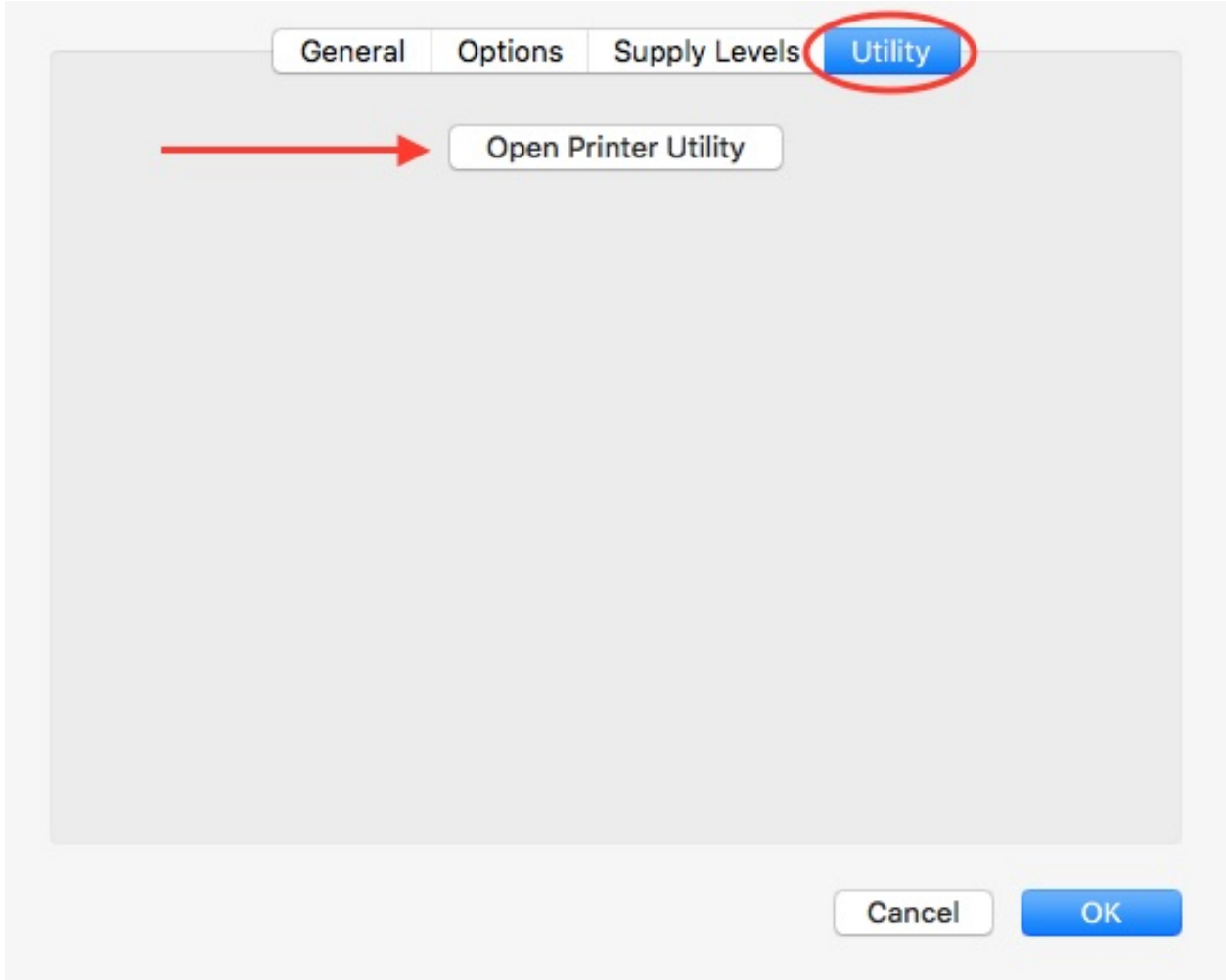
5.



6.



7.



TR: Burda 'User Information' a basarak devam edin ve Name bölümünde size özel verilen PIN numaranızı girin.

EN: By clicking on 'User Information' please make sure you enter your designated PIN number where it says Name.

8.

Kind: Canon iR-ADV C3325/3330

Printer Information

Remote UI

Department ID Management **User Information** Store Destination

Name to Set for User Name

Login Name

Enter Name

Name: 1111

PIN for Secured Print: (1 to 9999999)

Save Settings

Windows

TR: Yazıcı kullanım ücretimiz,

A4 Siyah/Beyaz 0.20 TL

A4 Renkli 0.80 TL

A3 Siyah/Beyaz 0.40 TL

A3 Renkli 1.60 TL

Windows Explorer açın. Adres çubuğuna \\192.168.1.20 adresini girin.

EN: Our price list per paper printed,

A4 Black/White 0.20 TL

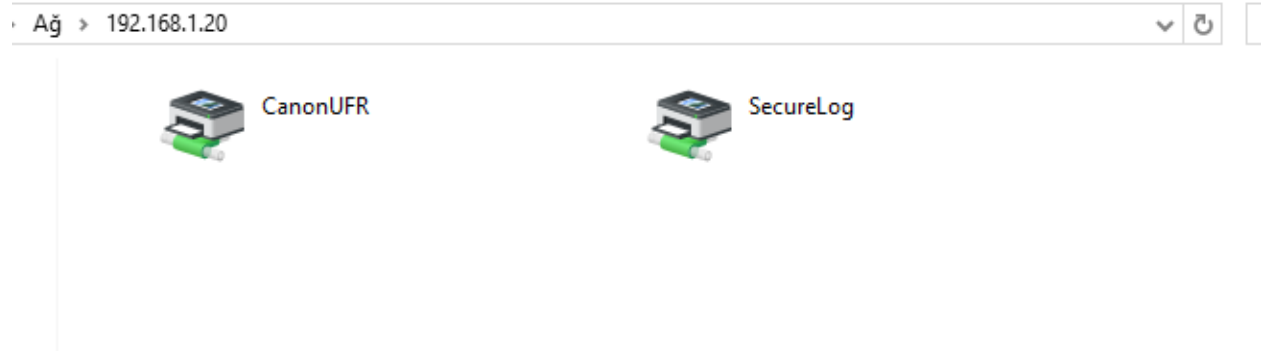
A4 Color 0.80 TL

A3 Black/White 0.40 TL

A3 Color 1.60 TL

Open Windows Explorer. Write \\192.168.1.20 into the address bar.

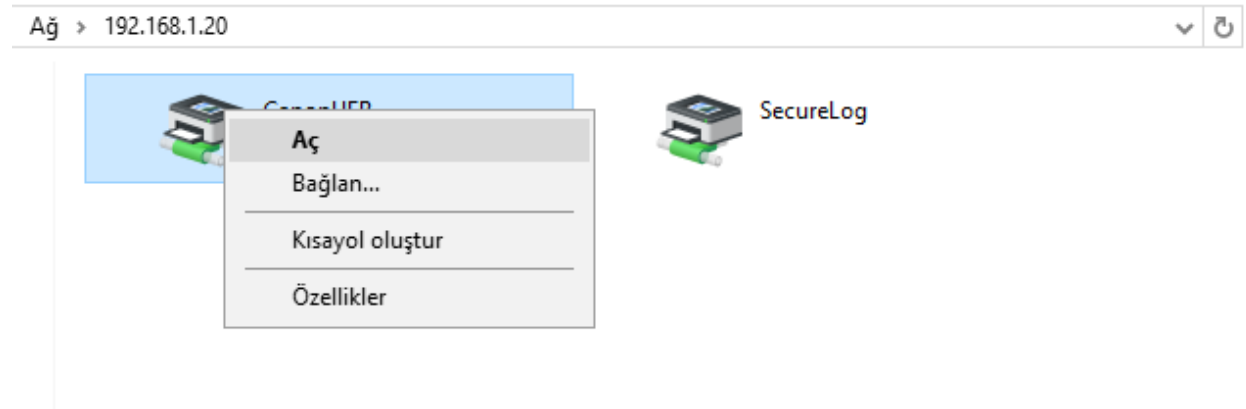
1.



CanonUFR adlı printera sağ tıklayıp bağlan seçeneğini seçin. Driver kurulu değilse otomatik olarak kurulacaktır.

Right click on the printer named CanonUFR and connect. If the driver is not set-up it will automatically install.

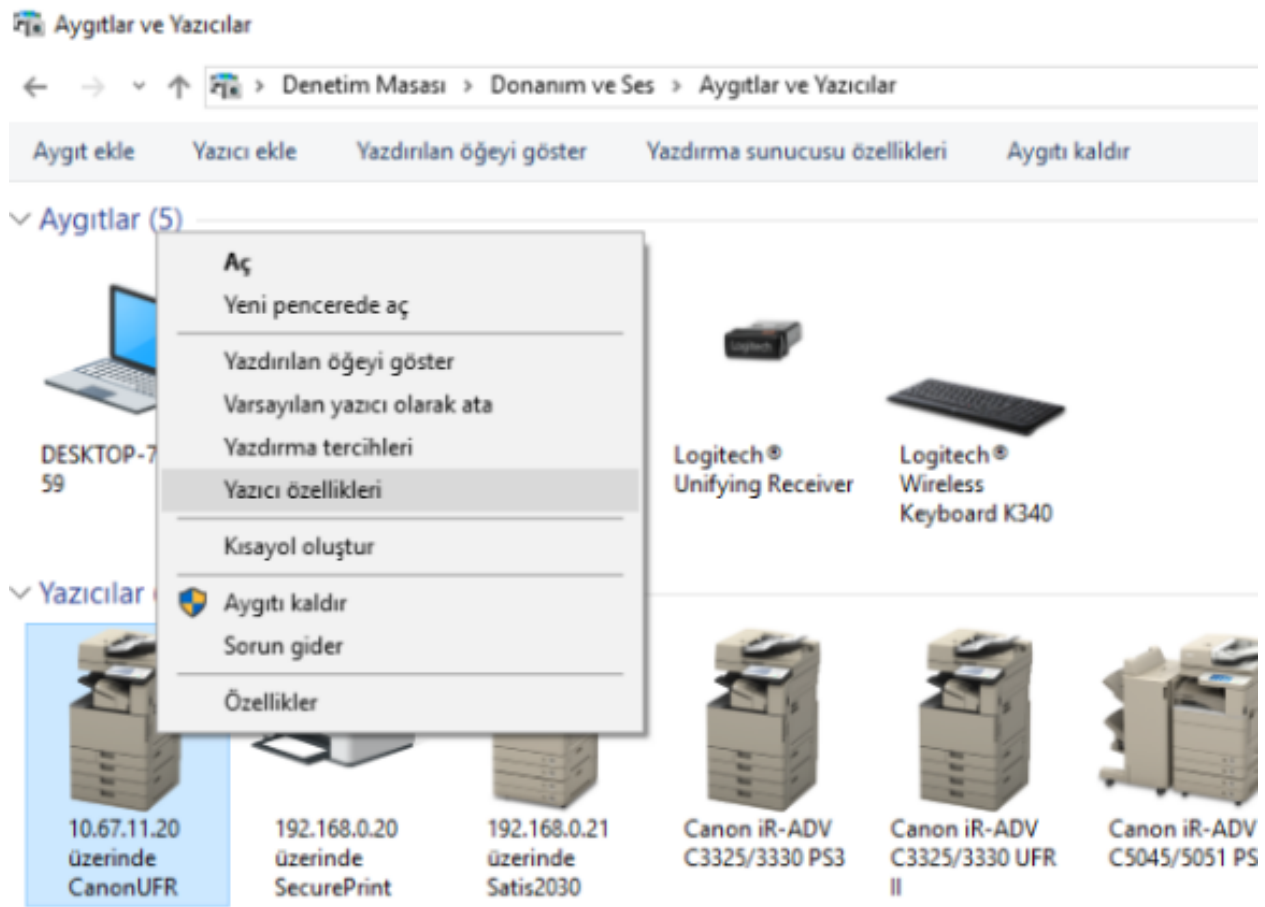
2.



Denetim Masası / Aygıtlar ve Yazıcılar ekranına gidin. Eklemiş olduğunuz yazıcıya sağ tıklayıp yazıcı özelliklerine girin.

Go to the Control Panel/ Devices / Printer screen. Right click on the printer you've entered and go to the settings page.

3.



Device Settings tabında aşağıdaki ayarları yaptıktan sonra "Set user information" karşısındaki settings(W) butonuna basın.

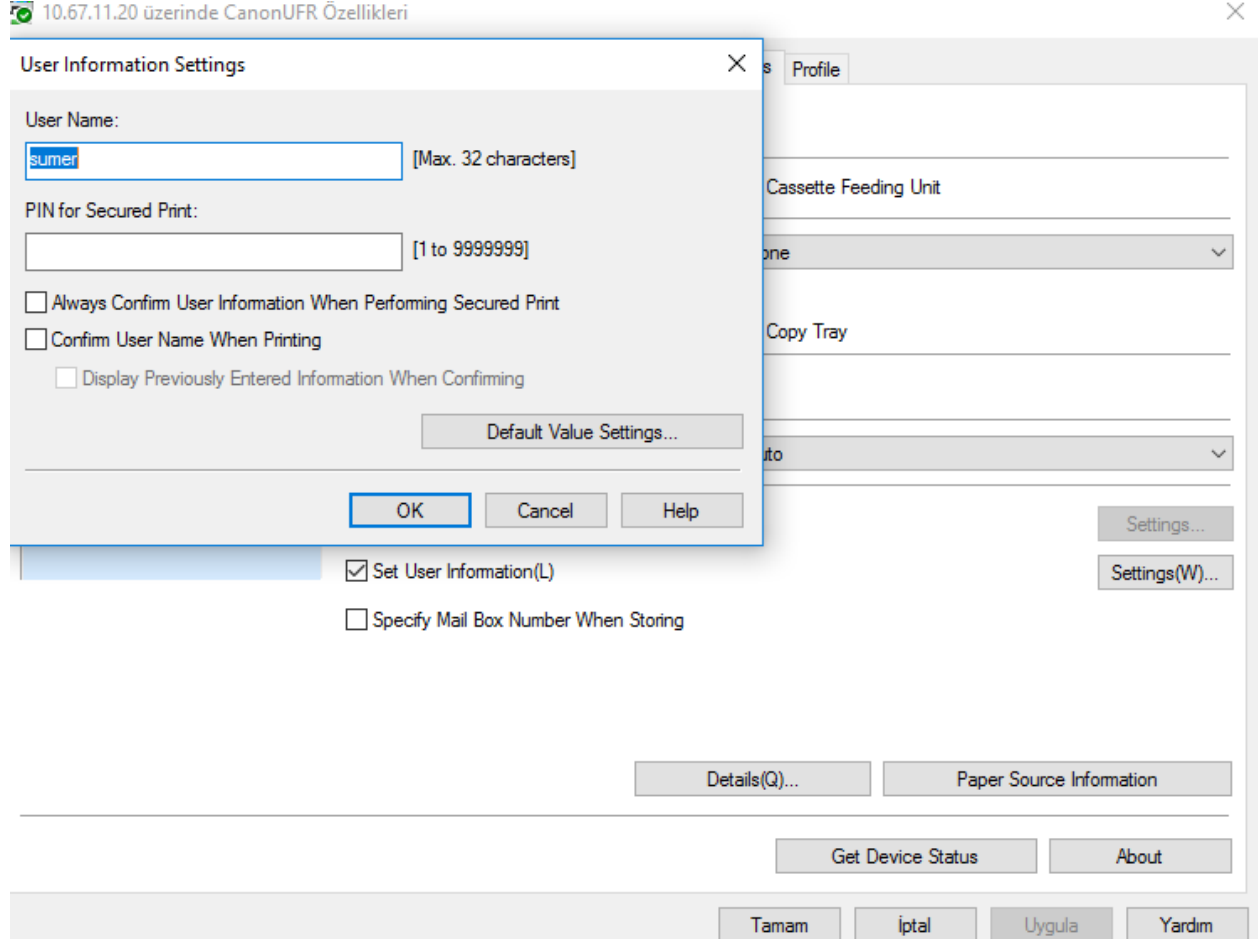
After making the adjustments shown below in the 'Device Settings' tab, press the settings button across the 'Set User Information'.

Username kısmına size verilen kullanıcı adını girin.
Enter Name seçili iken yine size verilen kullanıcı adını girin.

Put your username in the username section.

Put in your name where the 'Enter Name' section is selected.

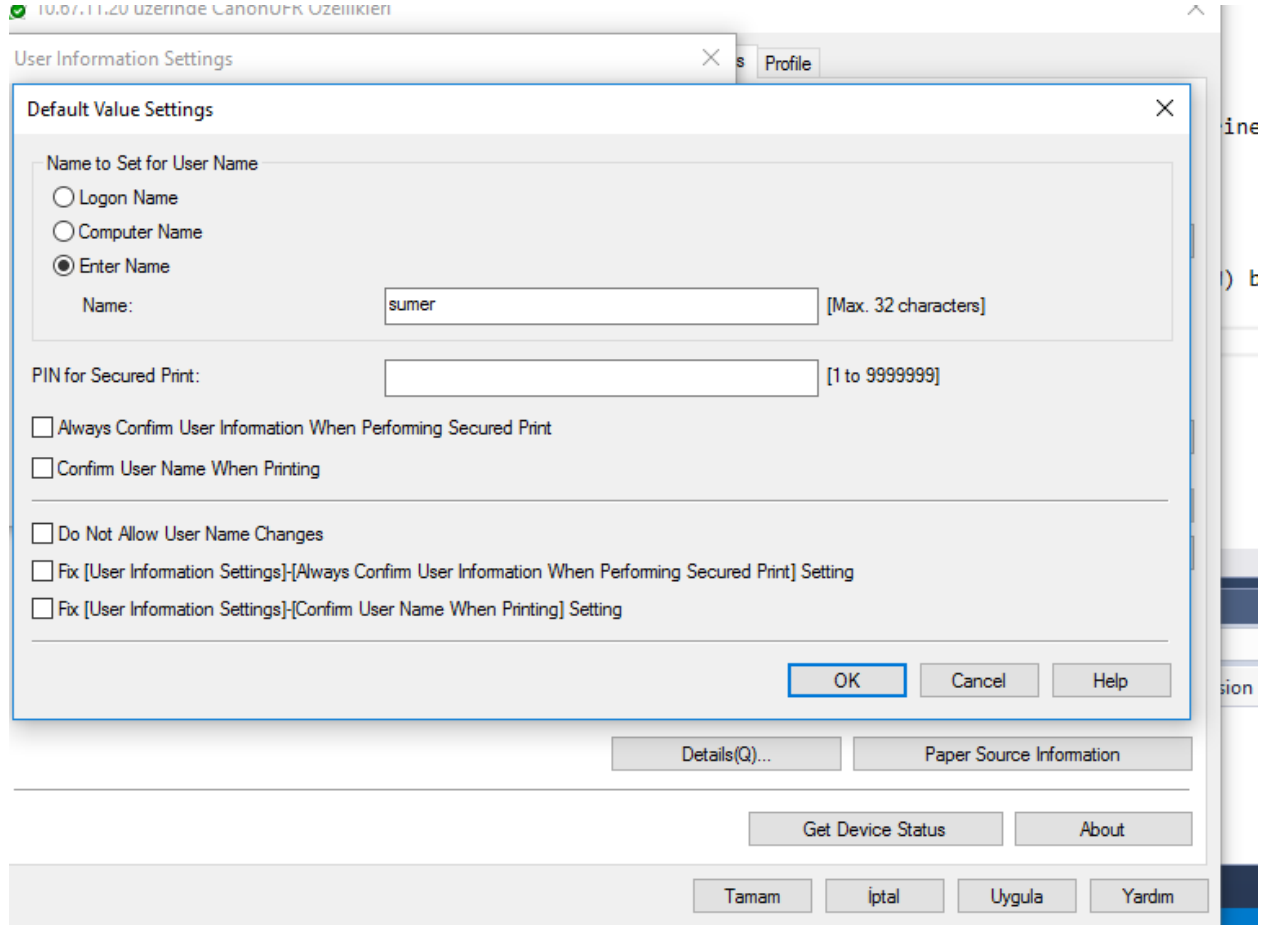
5.



Default value settings e basıp varsayılan ayar ekranına geçin

Press the 'Default Value Settings' and go to the settings page.

6.



Ayarları kaydedin. Printerı kullanmaya başlayabilirsiniz.

Save the settings. You can now start using the printer.